

BREECE HILL QUICK START GUIDE

I created these line drawings in Adobe Illustrator, using low resolution photos for reference. This guide takes the customer from unpacking the product to installing it into the rack mount to getting it up and running. The drawings had to be precise in order to accurately assist the user.

BizGuardian Appliance Quick Installation Guide

BizGuardian Installation

Follow these two easy steps and you will be on your way to fast and reliable backups.

Step One: Getting Ready

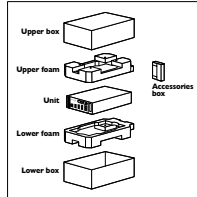


Figure 1

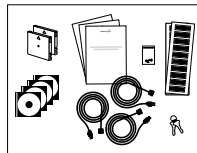


Figure 2

1. Move the BizGuardian shipping box close to your rack. Remember to keep the unit upright and avoid turning it sideways or at an angle. Leave the shiplocks in place until the unit is in its permanent location.
2. Scout the location and ensure you have 36 inches of front access space and 12 inches of back clearance. There should be no vent blockage.
3. You'll need a few things to install the BizGuardian including:
 - a. Three 15 volt or 230 volt a.c. outlets that can support 550 watts peak.
 - b. A keyboard, mouse and video monitor.
 - c. An open network port.
 - d. An administrator login and password if you are installing it in a domain.
 - e. A Windows License Key which you'll find attached to the BizGuardian.
4. Unpack the shipping box and verify that you have the same contents as in Figure 1. (See Figure 1).
5. In the accessories box you will find the materials as illustrated in Figure 2. (See Figure 2).
 - a. Two (2) front door keys
 - b. Twenty (20) tape cartridge barcode labels
 - c. Two (2) LTO 3 tapes
 - d. Three (3) power cords
 - e. Documentation, RAID card CD and motherboard CD
 - f. Rack mount hardware and instructions
 - g. BizGuardian Quick Install Guide and BizGuardian Configuration Guide
 - h. Operating System (OS) license and CD
 - i. EMC Retrospect CD and electronic documentation

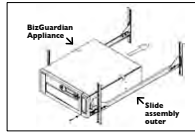


Figure 3

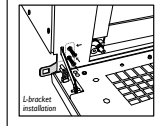
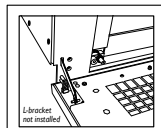


Figure 4

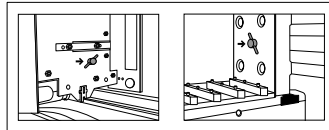


Figure 5

Step Two: Connecting BizGuardian

1. Take BizGuardian out of the box. Note the left and right inner rails are already attached to the BizGuardian.
2. Mount the outer rails onto the rack, using two 10-32 screws, two #10 flat washers and one nut-bar at each end of the rail. Outer rails should be mounted to an inner dimension of 16 7/8" (429mm). (See Figure 3). Tighten the rails in place.
3. Open the front doors and attach the securing tabs, which look like L-shaped brackets, with the two provided flat head screws to the front of the unit. (See Figure 4).
4. Now, you are ready to put the BizGuardian into your rack.
5. Using two people, carefully slide the inner rails onto the outer rails. Lock the BizGuardian into place using one of the provided 10-32 screws and one #10 flat washer on each side.
6. Open the front door and remove the two red ship locks by simply turning them counter-clockwise until the screws can be completely removed from the unit. (See Figure 5). Be sure to save your ship locks and packaging materials in the event you need to move your BizGuardian in the future.

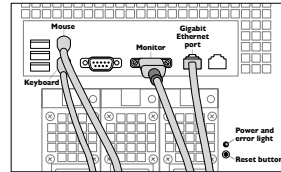


Figure 6

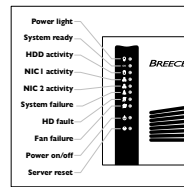


Figure 7

7. Connect your mouse, keyboard, monitor and Ethernet external cables. (See Figure 6.)
8. Power on the BizGuardian by pressing the button on the front of the unit using the tip of a pen. (See Figure 7)
9. After two minutes, verify an online status on the BizGuardian front panel display. (See Figure 8)



Figure 8

With your BizGuardian successfully placed into your rack, you are now ready to configure Windows Server 2003 and EMC Retrospect software. Please refer to the "BizGuardian Appliance Configuration Guide" which is located inside your accessories box for additional instructions.